



**MALIBU
REBUILDS**

CITY OF MALIBU COMMUNITY MEETING SERIES
**CARBON CANYON, CARBON MESA,
CARBON BEACH TERRACE NEIGHBORHOODS**

4 PM TUESDAY, APRIL 8, 2025





 **MALIBU
REBUILDS**

LA County ROE Status Dashboard

Select City
ALL CITIES

[Click here to upload additional documentation](#)

Data Updated:
04/08/2025 8:00AM PDT

Eligible Parcels
13,579

Total Opt-In Submissions
10,140

Transmitted to USACE
8,344

With USACE
7,306



Total ROE Under Review
810

Total Add. Info Needed
832

Removal Complete
1,038

Total Opt-Out
1,306

Maxar, Microsoft | CAMS

Powered by Esri



Step 1

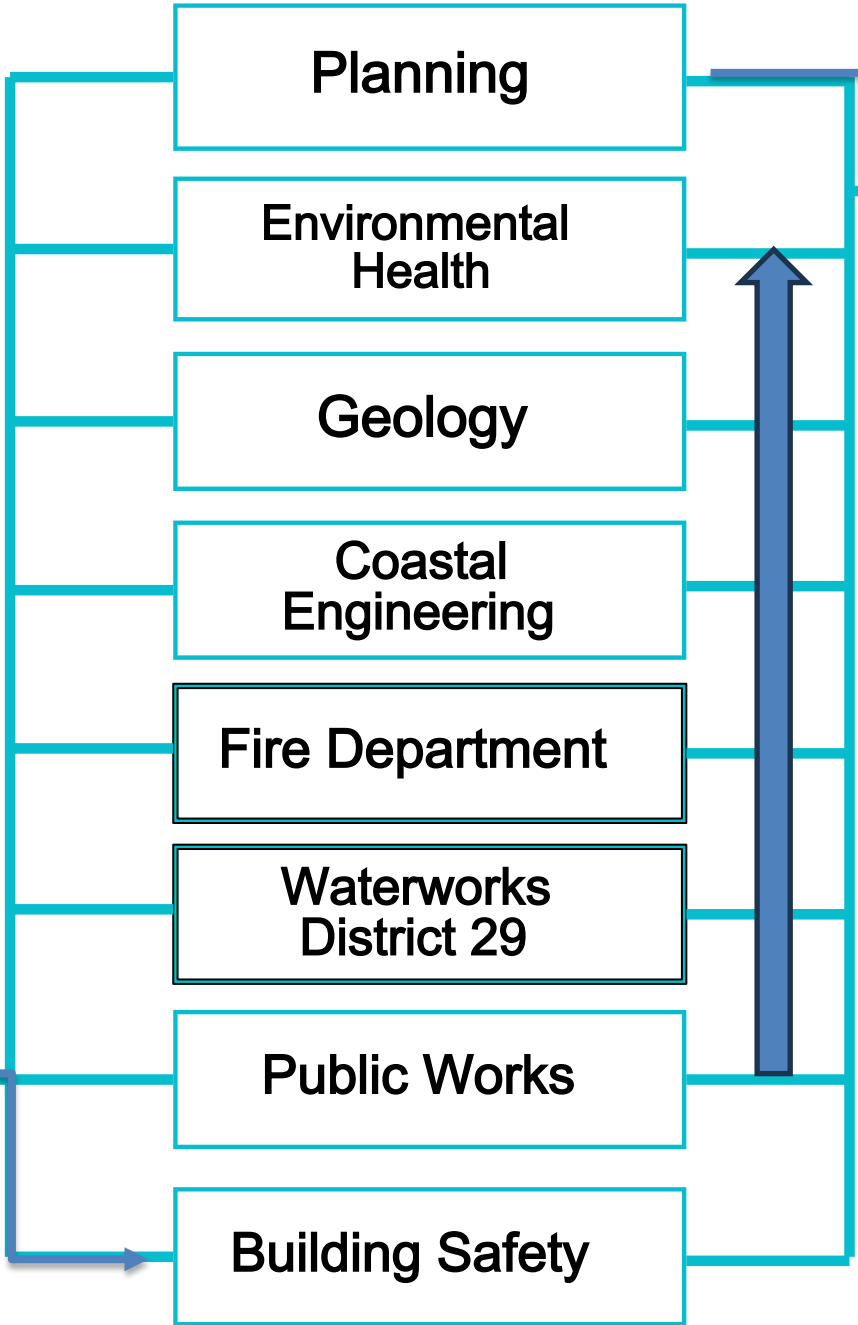
Pre-Application Staff Appointment
Planning Department

Planning Approval

Step 2

Plan Check Submittal Pre-screening by appointment with Building Safety, City Departments, and County Agencies

Plan Check Review and Approval



Step 3

Building Permit Issuance

Inspections by Building Safety, Public Works, Planning, and Fire Department

City Department

County Agency



STREAMLINING

- Substantial relocation of existing homes will be considered (DMW*)
- Multi -Parcel geotechnical reports are acceptable
- Multi -Parcel topographic surveys are acceptable

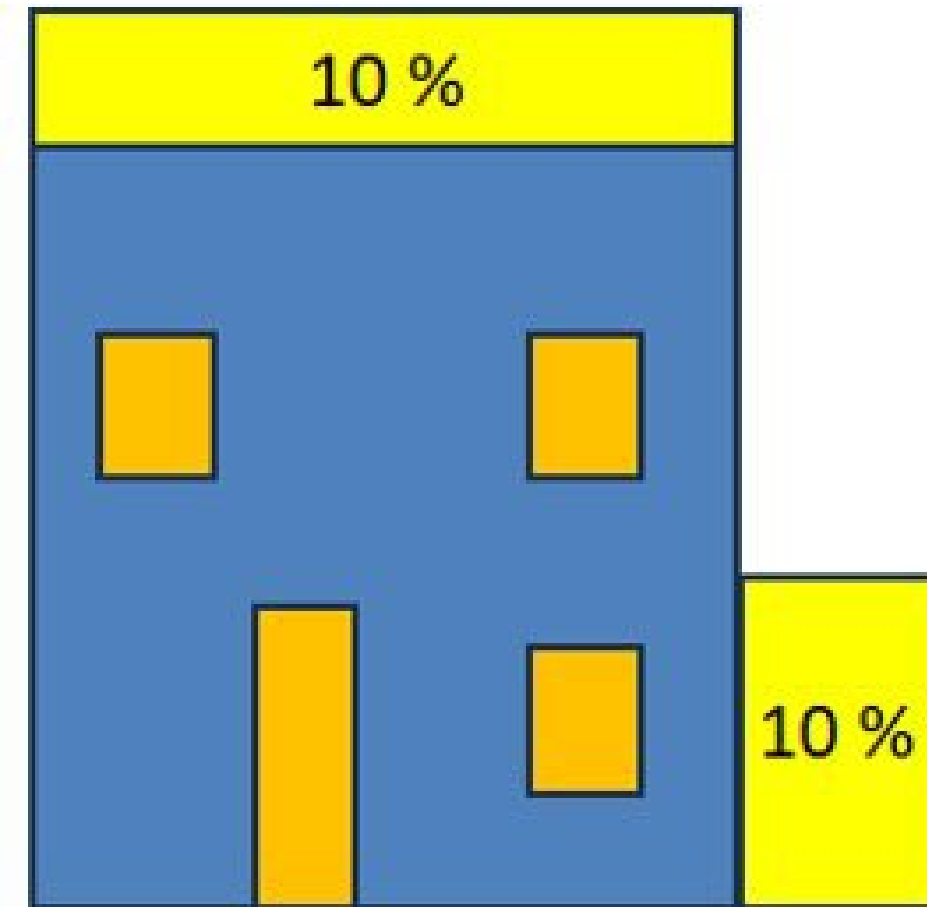
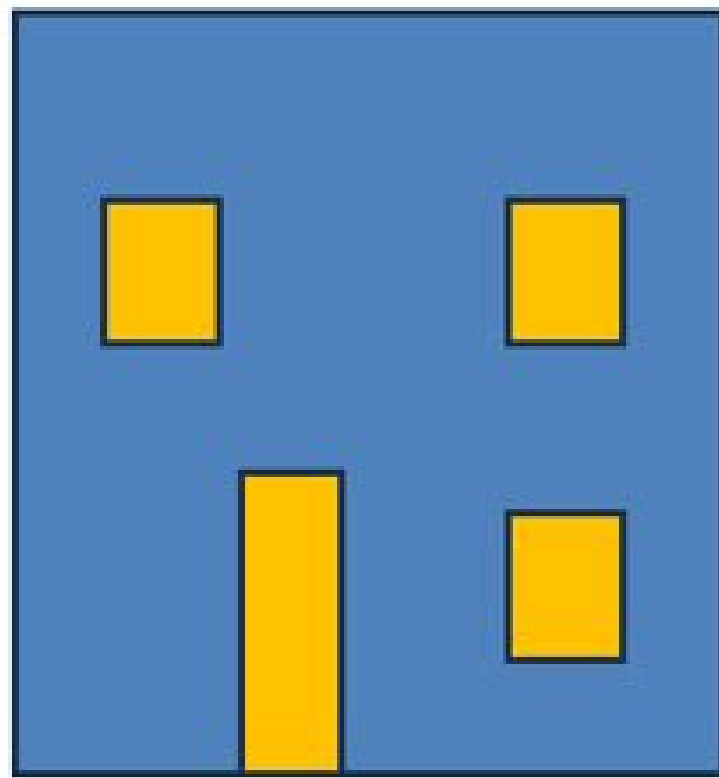
*DMW= De Minimis Waiver



SUBSTANTIAL RELOCATION



10 PERCENT HEIGHT INCREASE



COMMON GEOLOGIC ISSUES IN THE CARBON CANYON & CARBON MESA AREA

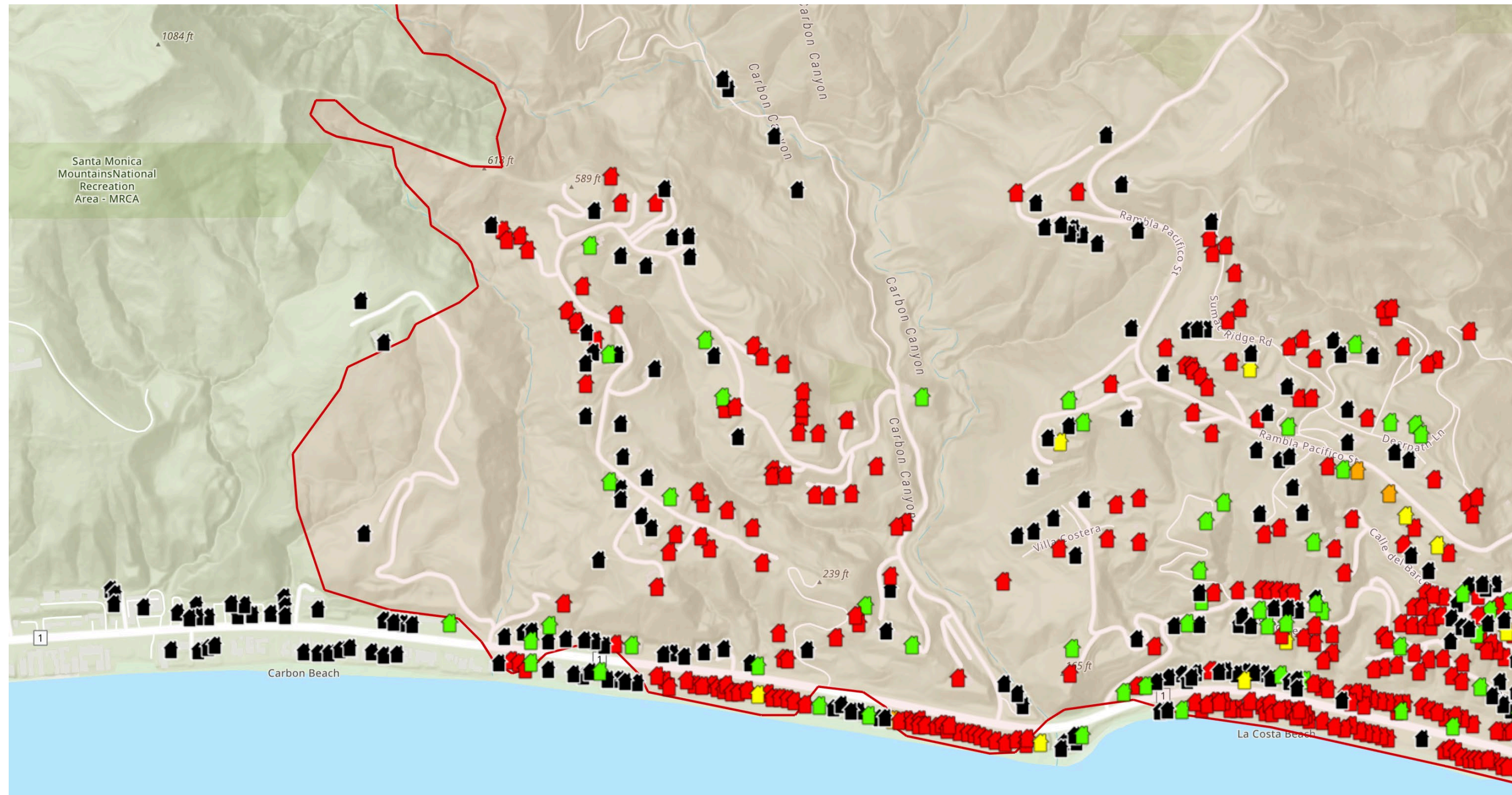
- Debris Flow Hazards (especially along canyon bottoms)
- Malibu Coast Fault Zone
- Liquefaction and Earthquake -Induced Landsliding Zones
- Mapped Landslides
- Slope Setbacks for Foundations
 - CBC Section 1808
 - Upslope Setback for Defensible Space
 - Downslope Setback for Adequate Embedment



CARBON CANYON & CARBON MESA



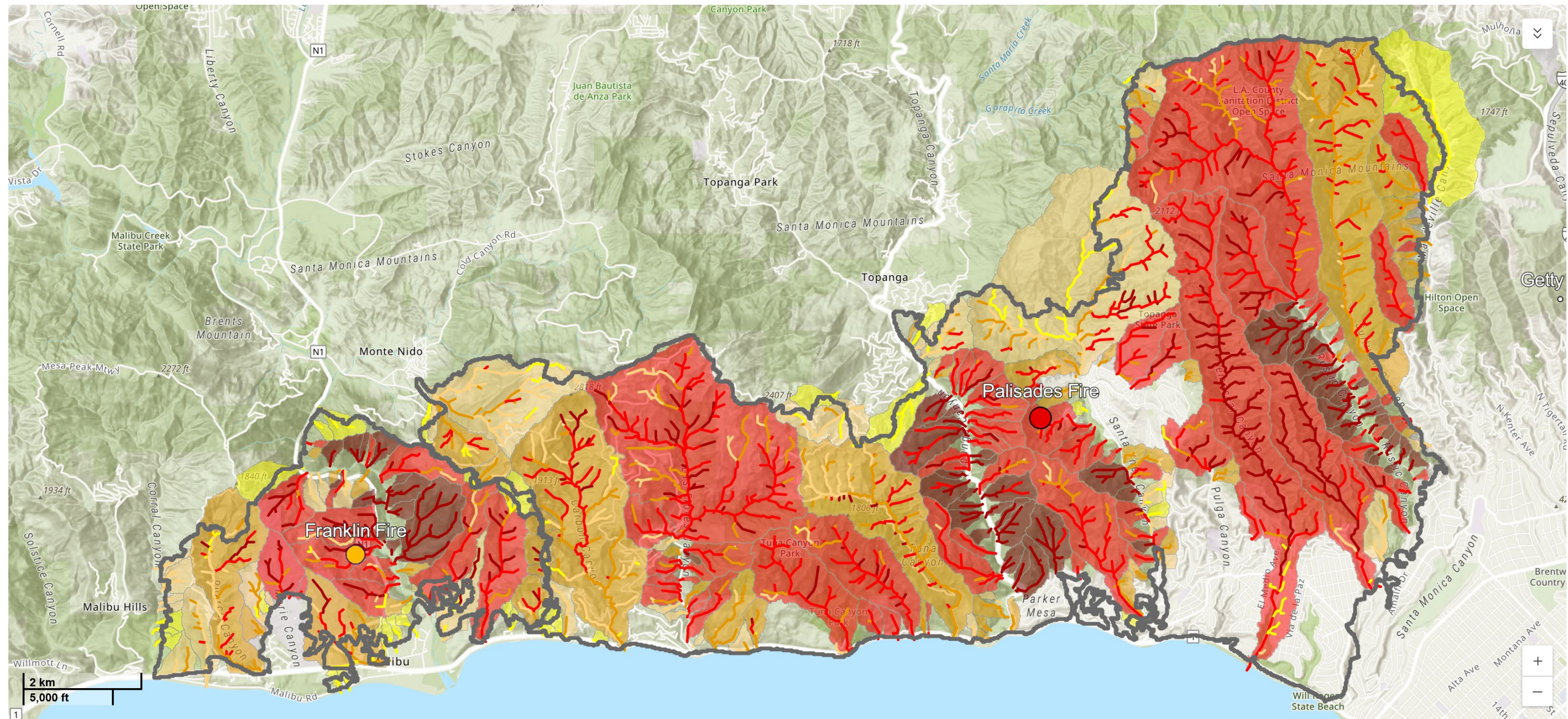
PALISADES FIRE DAMAGE MAP



Source: LA County Palisades Fire Damage Maps, <https://recovery.lacounty.gov/palisades-fire>



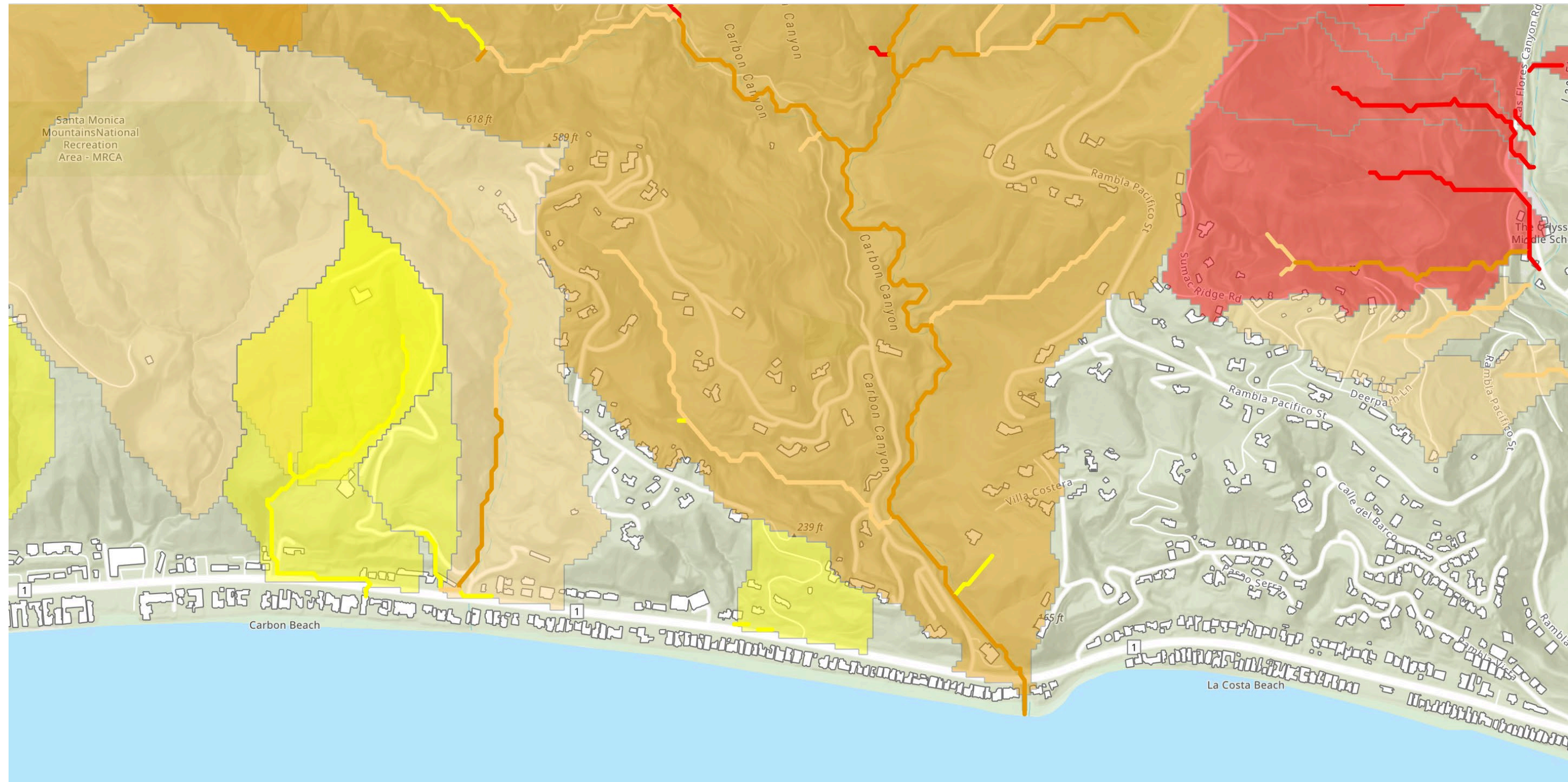
USGS DEBRIS FLOW HAZARD



Source: USGS Post-Fire Debris Flow Hazard Assessment Viewer, https://landslides.usgs.gov/hazards/postfire_debrisflow



USGS DEBRIS FLOW HAZARD



Source: USGS Post-Fire Debris Flow Hazard Assessment Viewer, https://landslides.usgs.gov/hazards/postfire_debrisflow



MALIBU COAST FAULT



Source: CGS Fault Evaluation Report FER-229, https://filerequest.conservation.ca.gov/?q=FER_229



MALIBU COAST FAULT ZONE



Source: CGS Fault Evaluation Report FER-229, https://filerequest.conservation.ca.gov/?q=FER_229



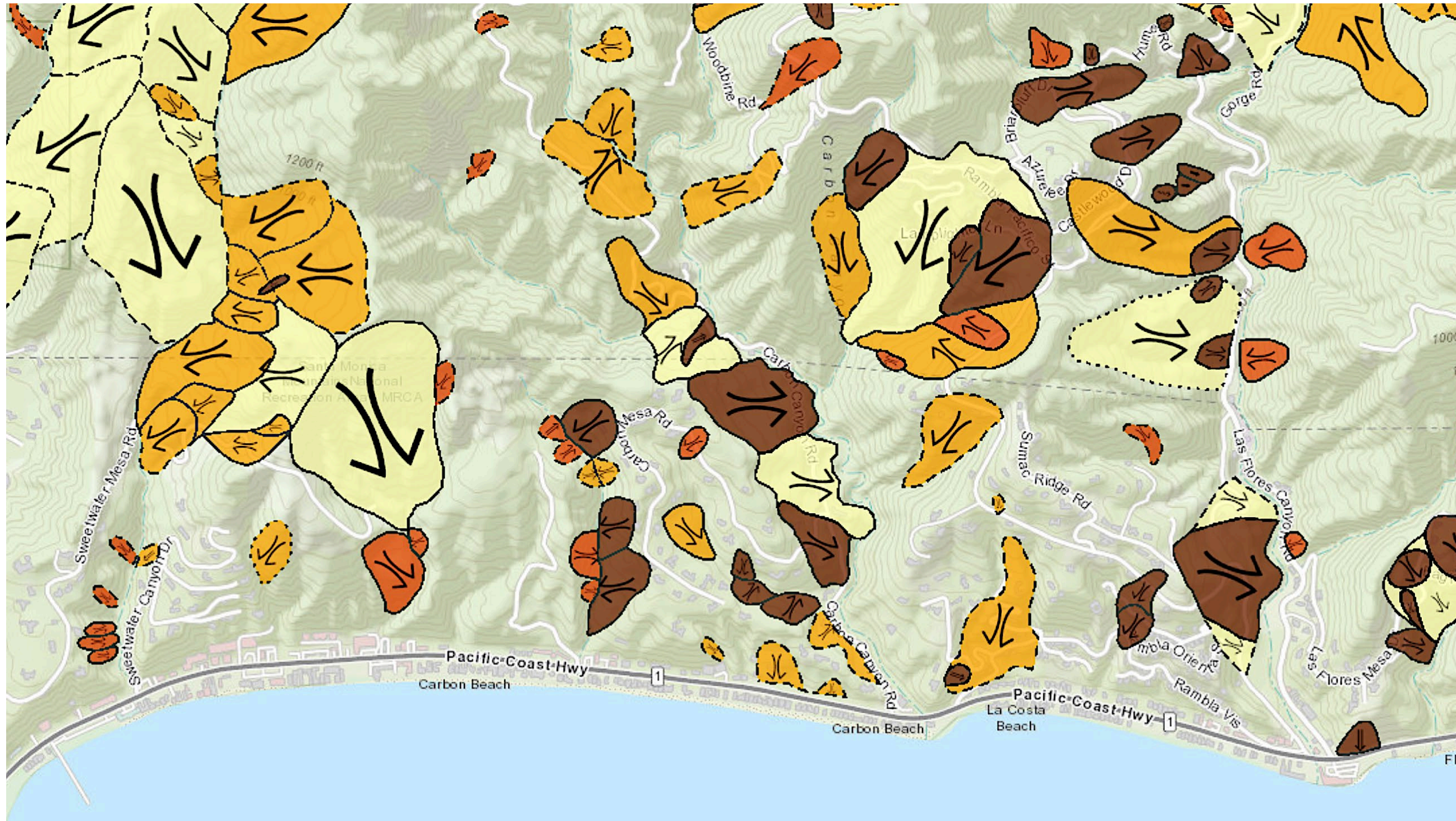
POTENTIAL SEISMIC HAZARD ZONES



Source: Earthquake Zones of Required Investigation, <https://maps.conservation.ca.gov/cgs/informationwarehouse/eqzapp>



CGS LANDSLIDE INVENTORY MAPS

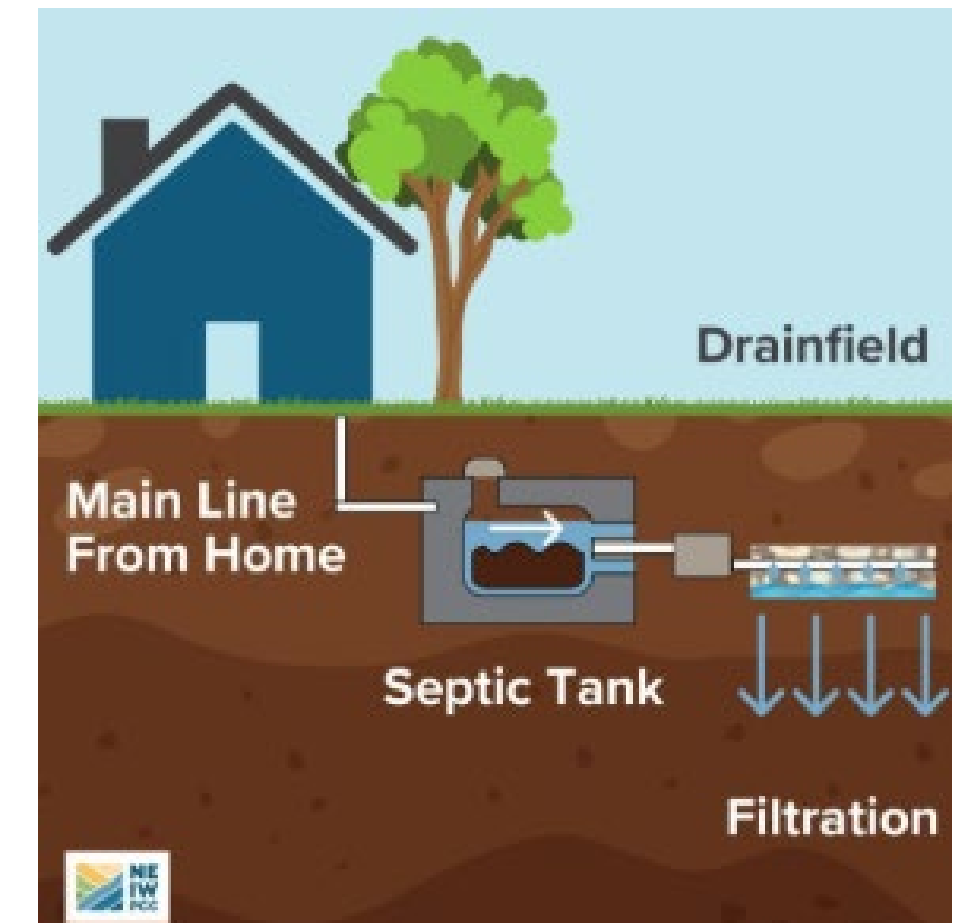


Source: CGS Landslide Inventory (Beta), <https://maps.conservation.ca.gov/cgs/lsi>



REBUILD STRUCTURE

- The replacement structure(s) shall have the same permitted number of:
 - Bedrooms
 - Plumbing fixtures
 - Plumbing fixture units
- Rebuilds on landslides must conform to LA County Building Code Section 110.2.3.6



EH SUBMITTTAL REQUIREMENTS

- Floor plans
- Fixture unit worksheet
- OWTS Fire Damage Assessment Form
- Site plan with location of OWTS and all structures



MALIBU REBUILD CENTER - COME VISIT US!



23805 Stuart Ranch Road, Suite 240

- Located across the parking lot from Malibu City Hall (next to UCLA Health)



Open: Monday - Friday (8 am - 4 pm)



(310) 456 - 2489, ext. 400

