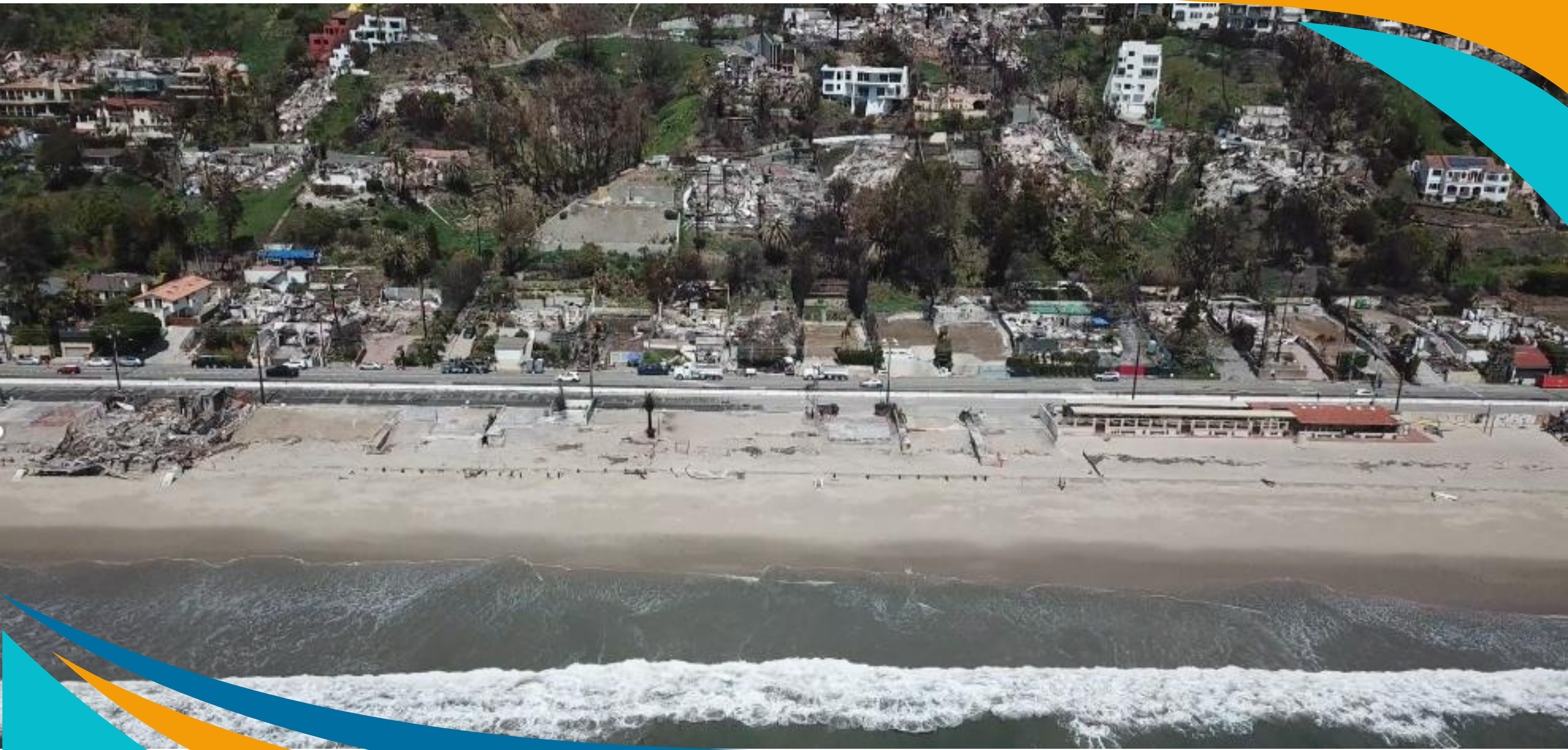


**MALIBU  
REBUILDS**

**CITY OF MALIBU COMMUNITY MEETING SERIES**

# **BEACHFRONT PROPERTIES**

**4 PM TUESDAY, APRIL 15, 2025**





# U.S. Army Corps of Engineers CA Wildfire Debris Mission

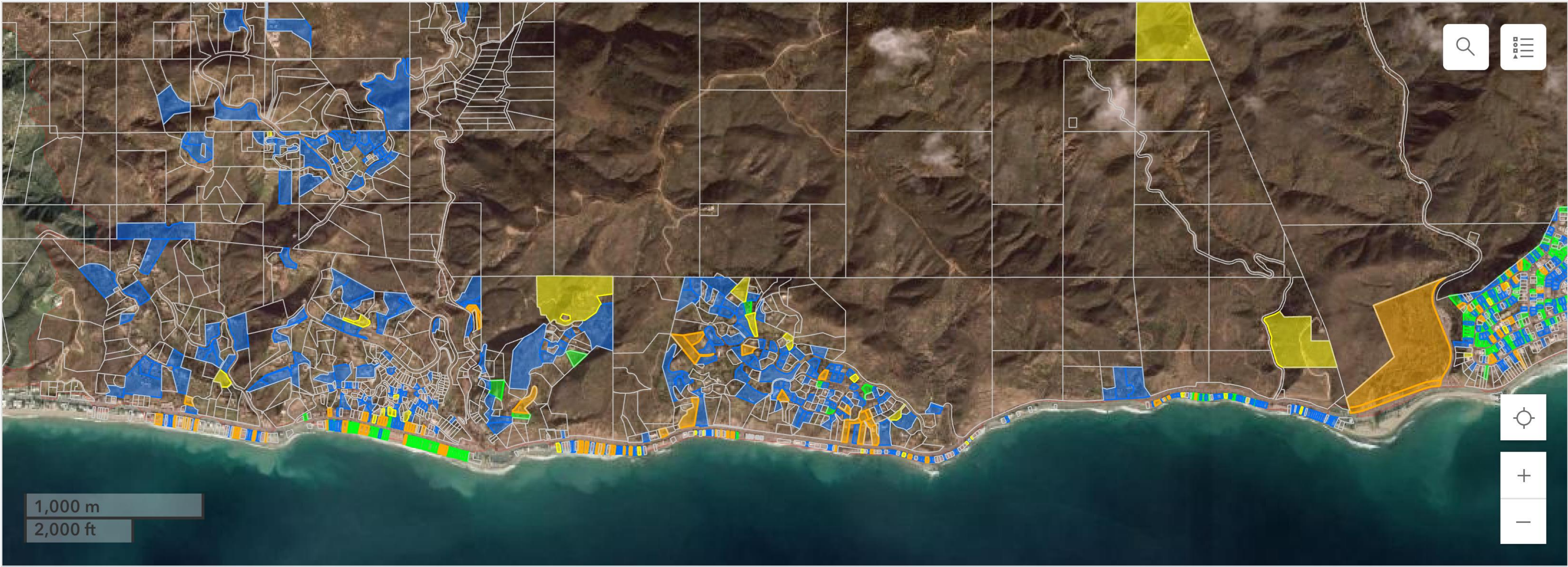
Filter by Fire  
Palisades

Est. Eligible Parcels  
**13,579**

ROEs Accepted from County  
**3,582**

In Progress with Contractor  
**3,582**

Final Sign Off  
**1,021**

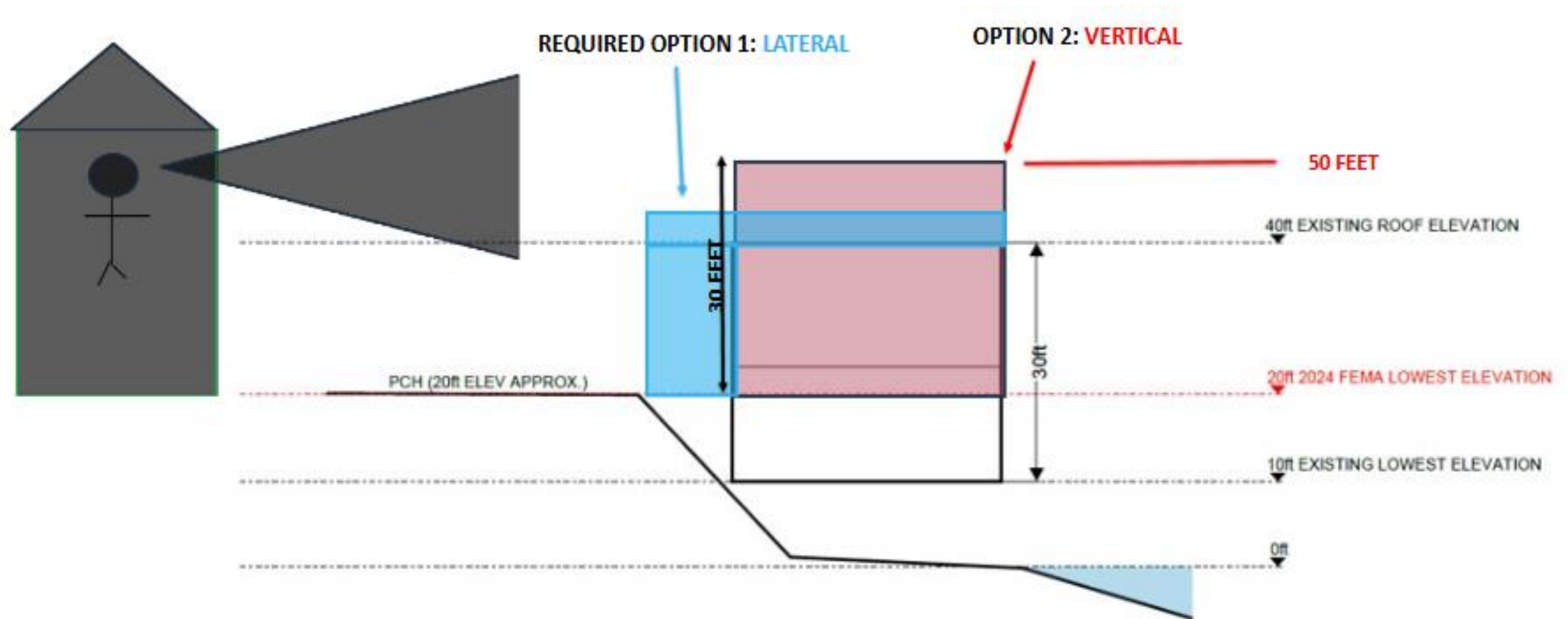


Maxar, Microsoft

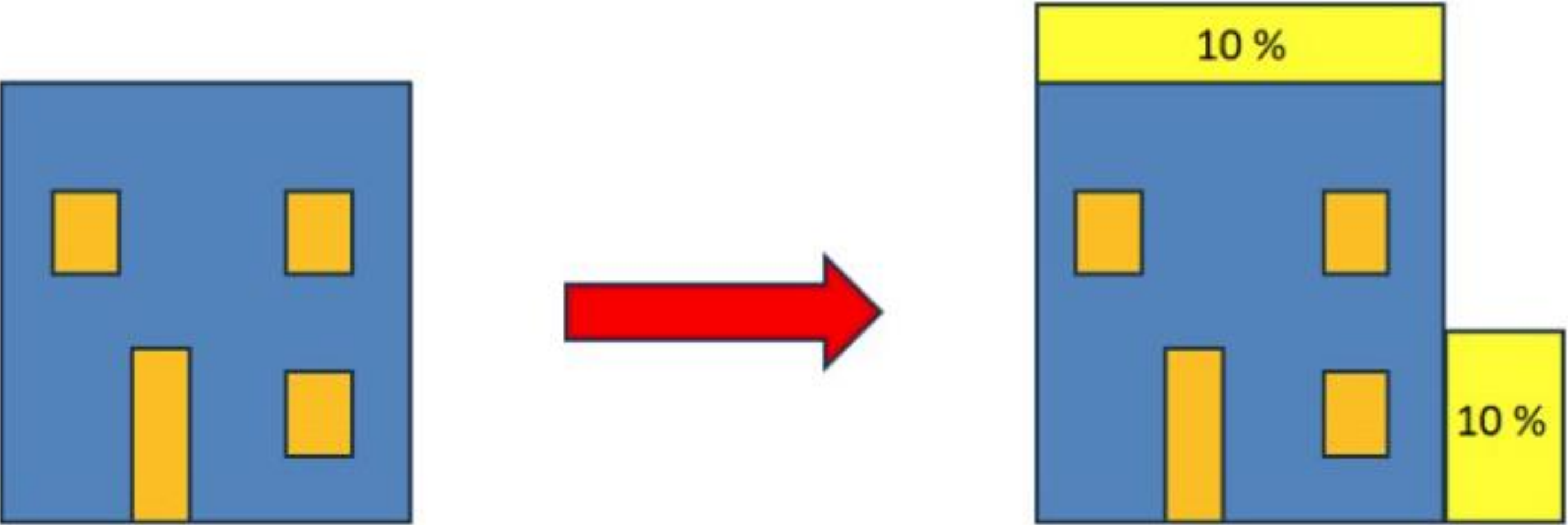
Powered by Esri



# FEMA INCREASES

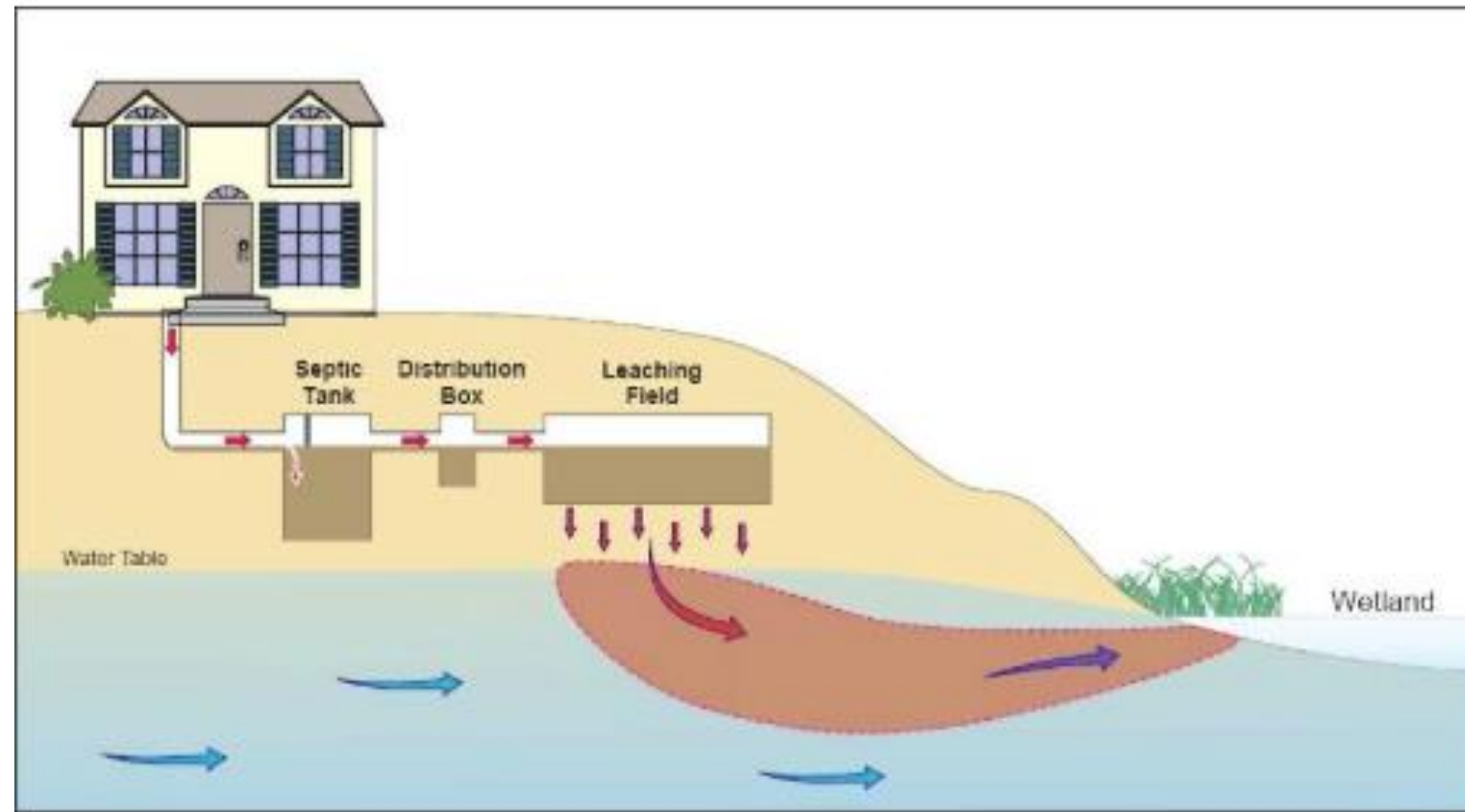


# 10% SQUARE FOOTAGE, HEIGHT, AND BULK



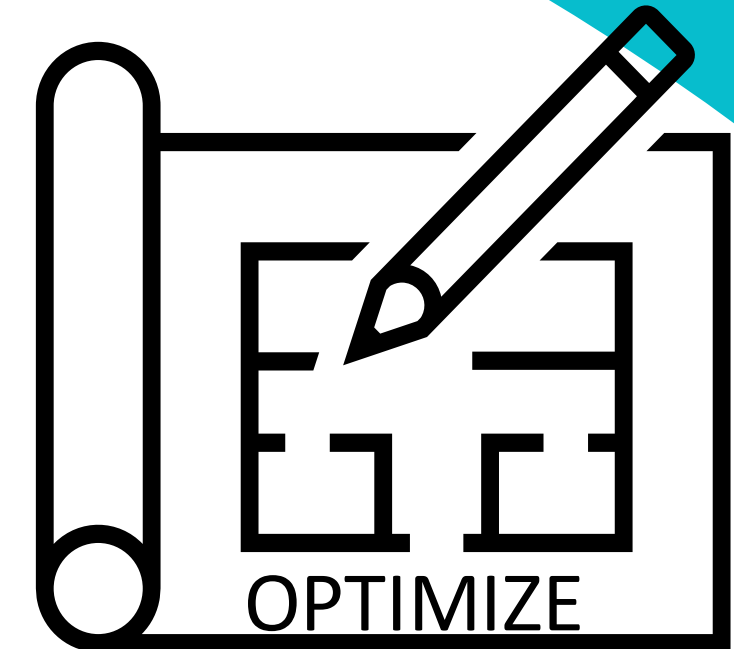
# BEACHFRONT OWTS

- Supplemental treatment = advanced OWTS
- MMC 15.40.090, Local Agency Management Plan



# SEAWALLS

- **Q1:** Is it a seawall?
  - **Engineered and permitted.**
- **Q2:** Is it structurally sound?
  - **Must be code conforming.**
- **Q3:** Can it be repaired, rebuilt or is a new wall required?
  - **Requires reports below.**



## Reports to address above questions

- Structural Evaluation: **Structural Engineer with Marine Experience**
- Coastal Engineering: **Coastal Engineer w/ design experience**
- Geotechnical Report: **Soils Engineer (PE) & Engineering Geologist (CEG)**  
(Comprehensive)

**Multi-parcel reports are acceptable**



# MALIBU REBUILD CENTER - COME VISIT US!



**23805 Stuart Ranch Road, Suite 240**

- Located across the parking lot from Malibu City Hall (next to UCLA Health)



**Open: Monday - Friday (8 am - 4 pm)**



**(310) 456 - 2489, ext. 400**

