

**MALIBU
REBUILDS**

CITY OF MALIBU COMMUNITY MEETING SERIES

**RAMBLA PACIFICO, LAS FLORES MESA, PENA ROAD,
20717 - 20759 PCH, LA COSTA NEIGHBORHOODS**

4 PM TUESDAY, APRIL 1, 2025

LAS FLORES MESA



NEW DEADLINE FOR ROE: APRIL 15, 2025

U.S. Army Corps of Engineers CA Wildfire Debris Mission

Filter by Fire
None

Est. Eligible Parcels

13,579

ROEs Accepted from County

7,647

In Progress with Contractor

7,647

Final Sign Off

1,167

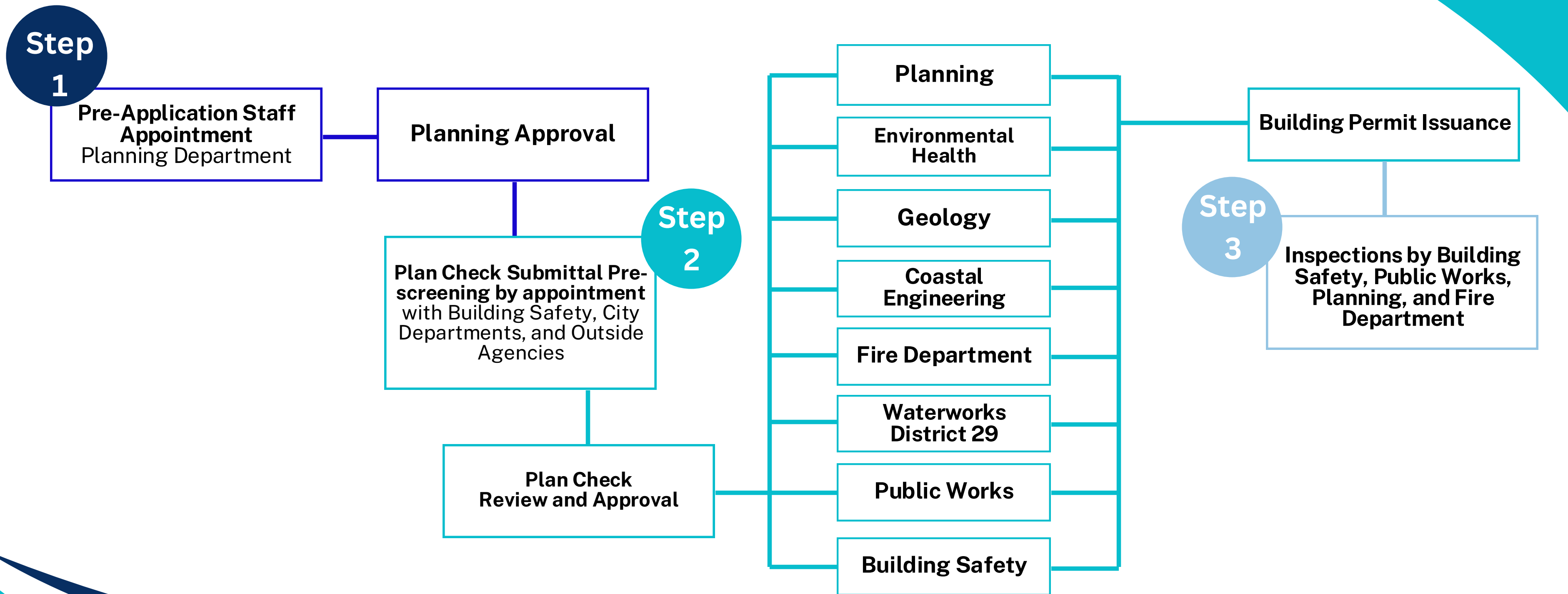
9%



Maxar, Microsoft

Powered by Esri





STREAMLINING

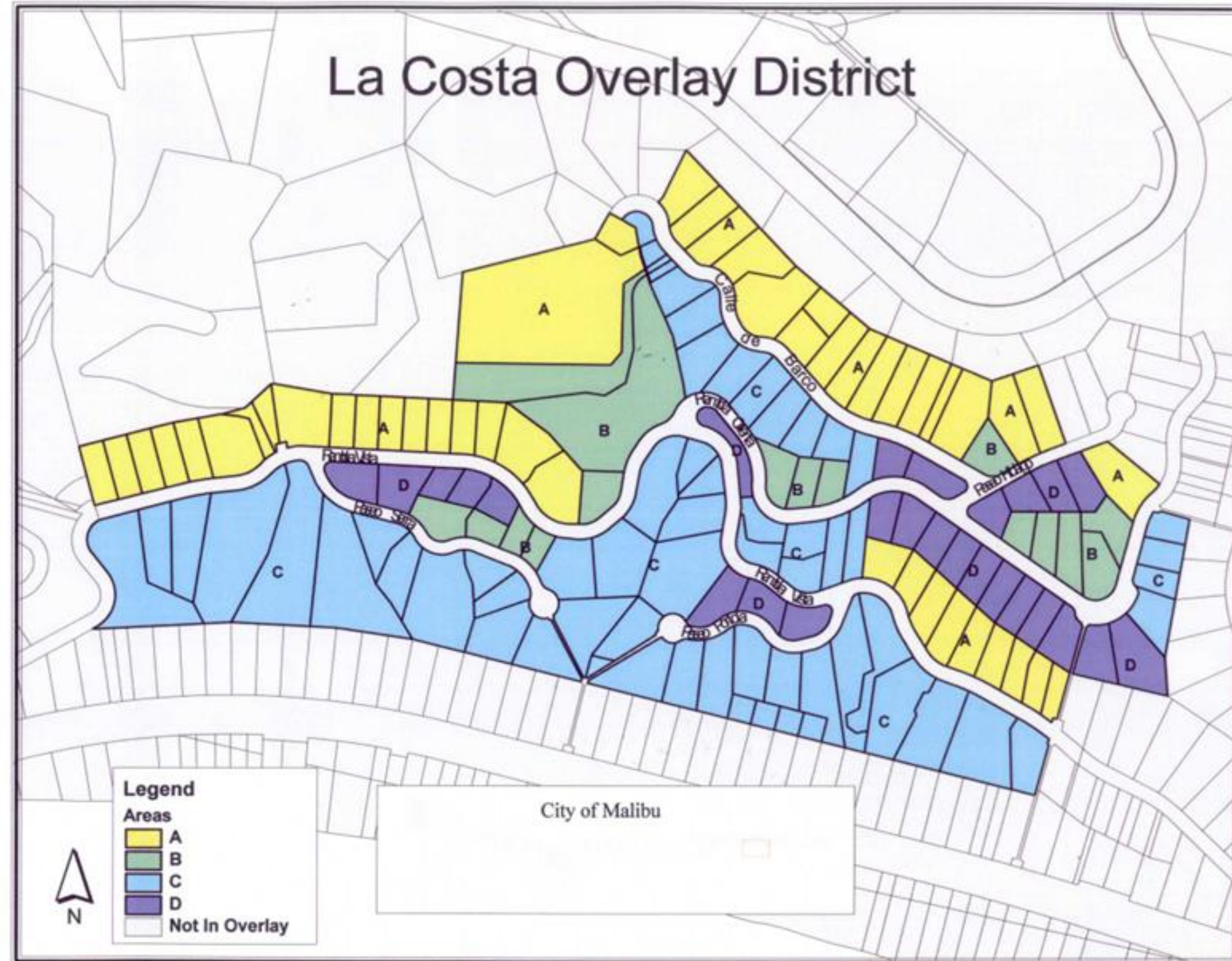
- Substantial relocation of existing homes will be considered (DMW*)
- La Costa Overlay
- Multi-Parcel geotechnical reports are acceptable
- Multi-Parcel topographic surveys are acceptable
- Landslide study reports will be made available/centralized

***DMW= De Minimis Waiver**



LA COSTA OVERLAY DISTRICT

MMC Section
17.42.020(B)



SUBSTANTIAL RELOCATION



GEOLOGY TOPICS

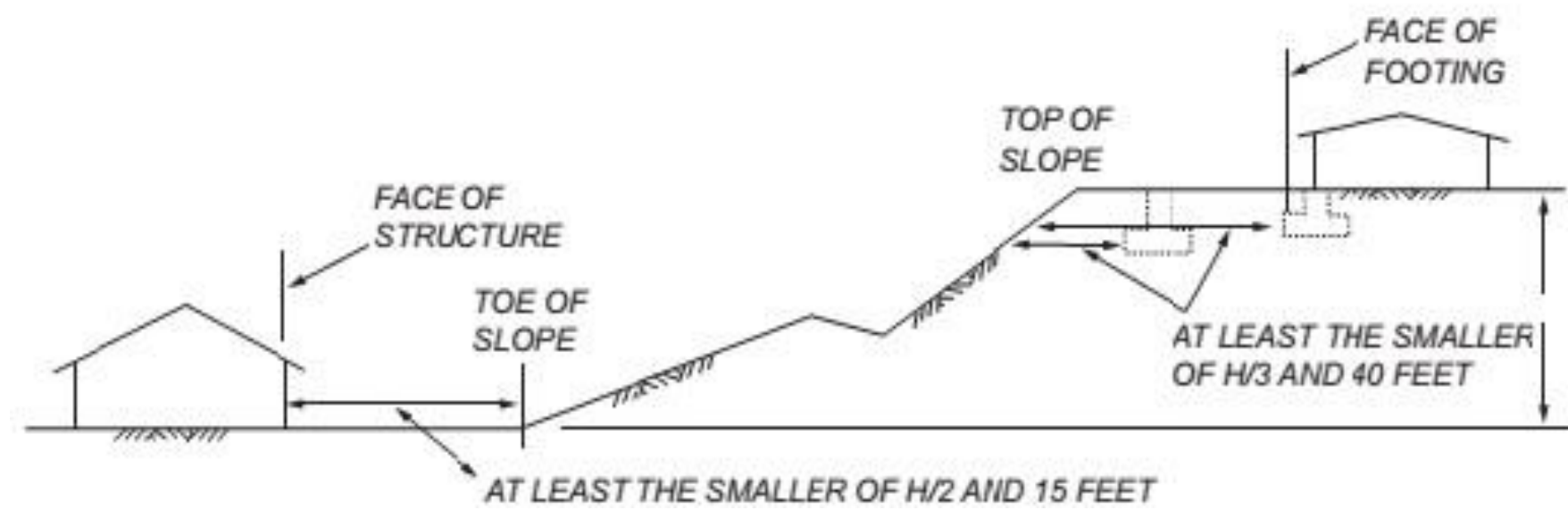
- Geotechnical Issues
 - Limited Report vs. Comprehensive Report
 - Bluff setback (along north side of PCH-Las Tunas)
 - Slope setbacks (foundations, building clearance)
 - Geotechnical Hazard Areas
 - Historically Active and Dormant/Ancient Landslides
 - Earthquake-Induced Landslide Susceptibility (SHMA)
 - Malibu Coast Fault Zone
 - Debris Flow Hazard Areas

PENA CANYON/LAS TUNAS BEACH



GEOLOGY TOPICS

- Limited Report vs. Comprehensive Report
 - Depends on scope of rebuild and location
 - Depends on re-use of existing foundation system
- Slope setbacks (foundations, building clearance)
 - CBC Section 1808

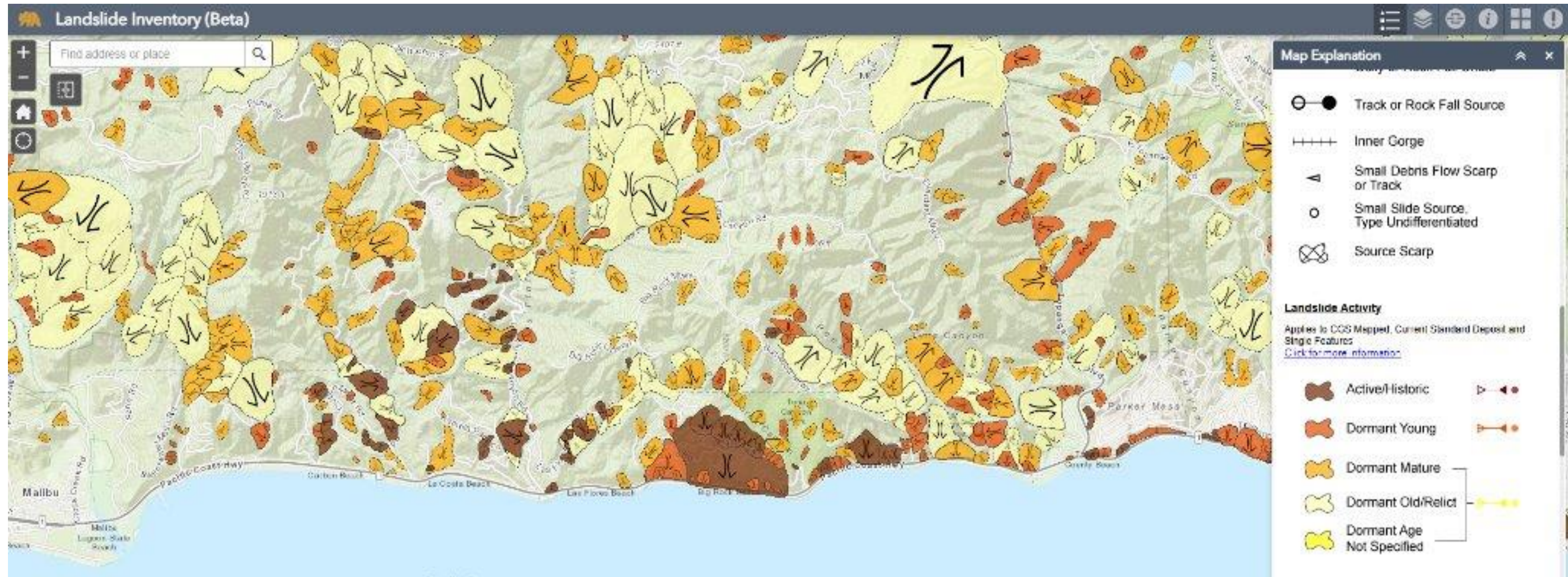


GEOTECHNICAL HAZARD AREAS

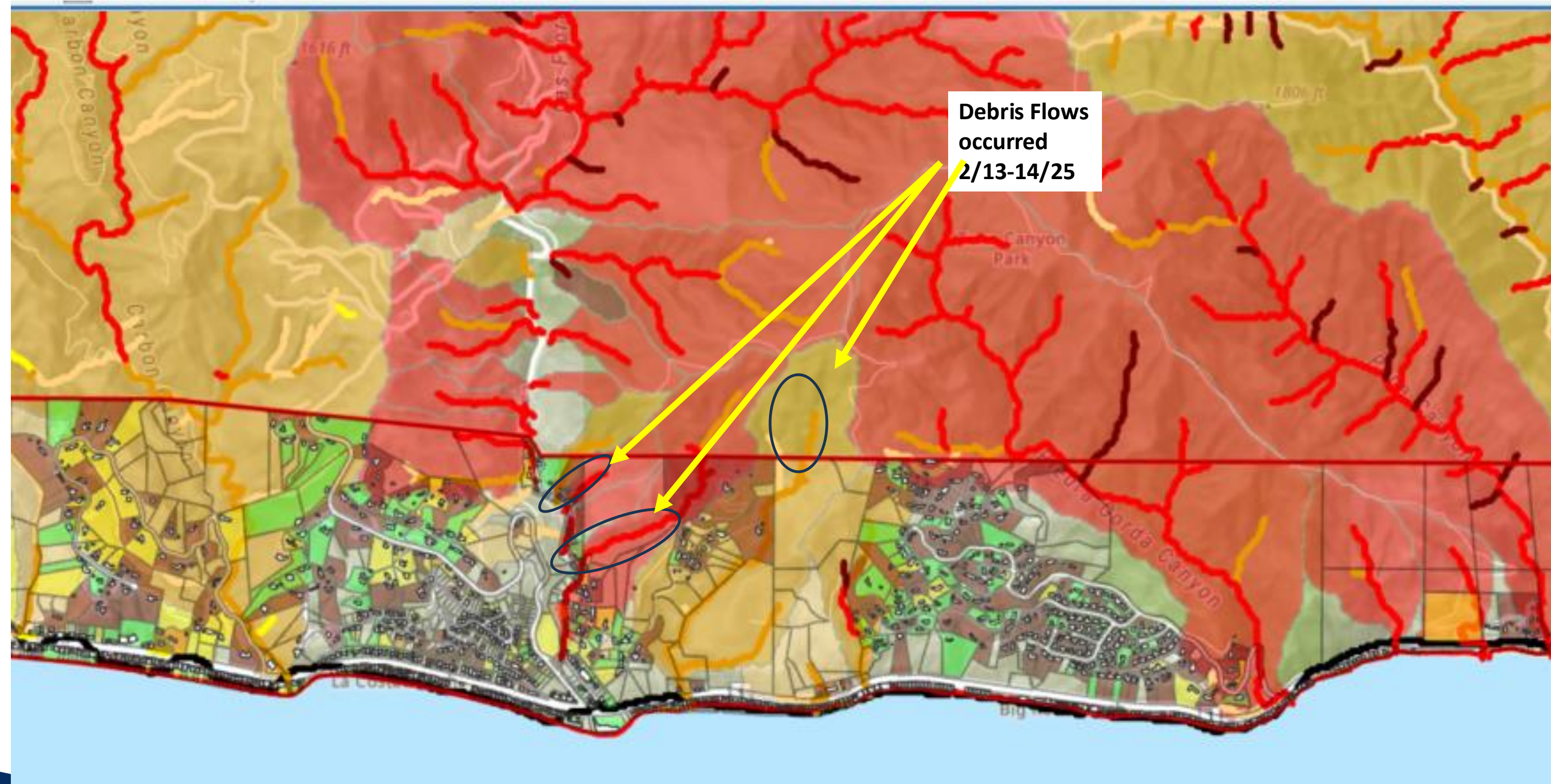
- Historically Active Landslides
 - Las Flores Mesa/Eagle Pass Landslide
 - Rambla Pacifico Landslide
 - Calle del Barco Landslide
- Dormant/Ancient Landslides – Inventory Map
- Debris Flow-Susceptible Areas – USGS Maps
- CLABC Sections 110 and 111 (part of MMC)
 - Section 110.2.3.6 will apply to rebuilds on landslides



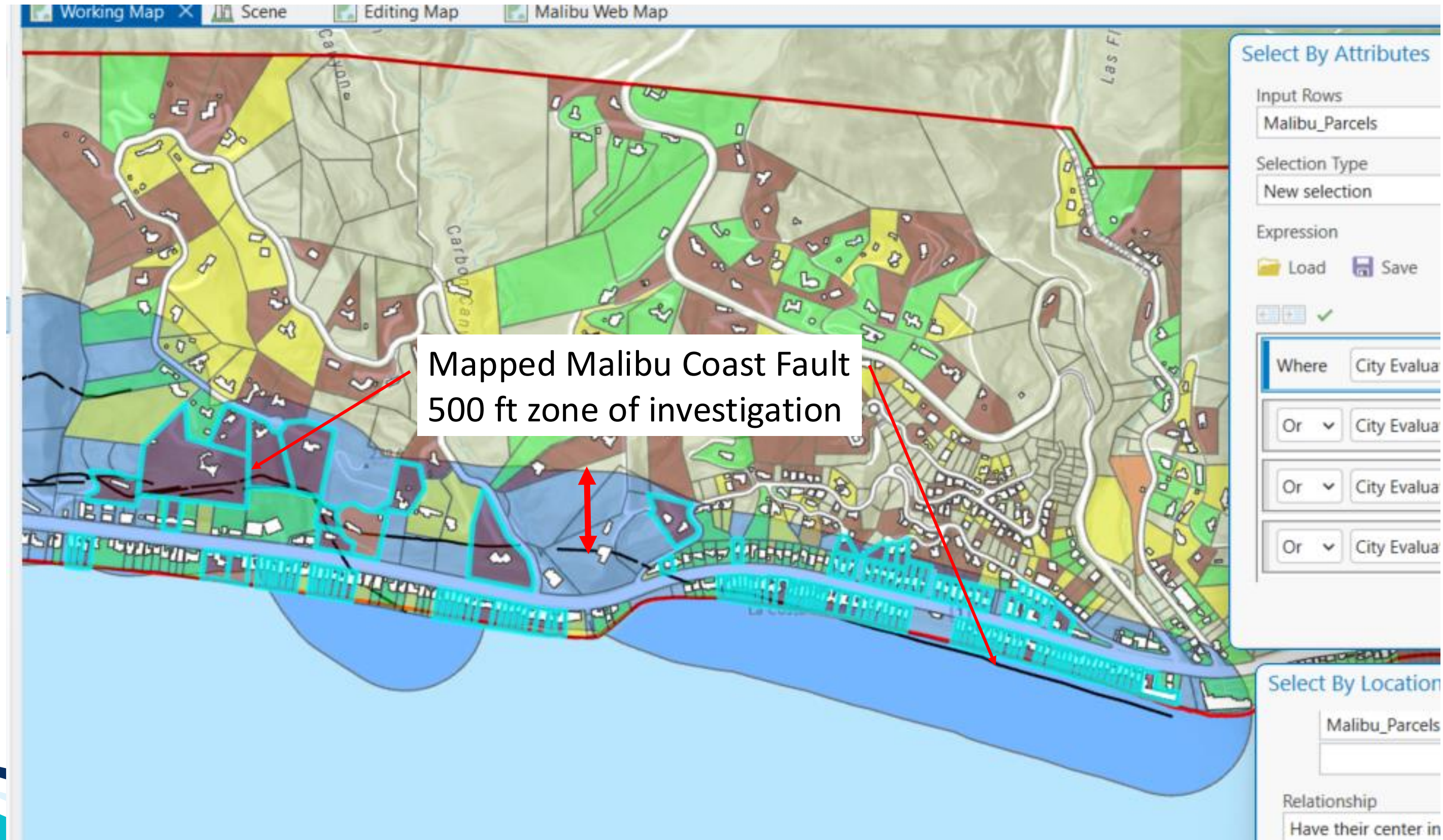
LANDSLIDE INVENTORY MAP



POST-FIRE DEBRIS FLOW HAZARD MAP

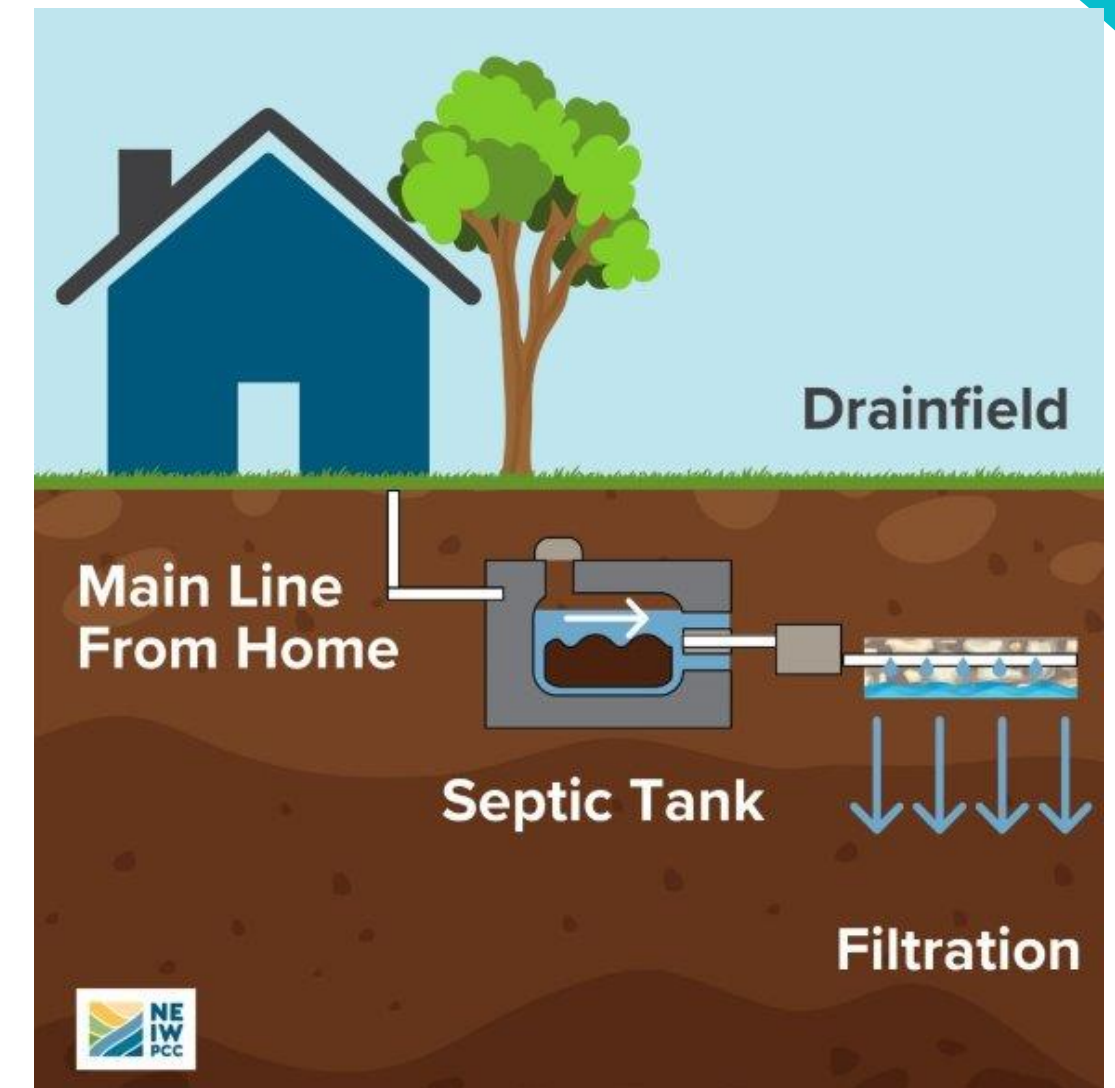


MALIBU COAST FAULT ZONE MAP



REBUILD STRUCTURE

- The replacement structure(s) shall have the same permitted number of:
 - Bedrooms
 - Plumbing fixtures
 - Plumbing fixture units
- Rebuilds on landslides must conform to LA County Building Code Section 110.2.3.6



EH SUBMITTAL REQUIREMENTS

- Floor plans
- Fixture unit worksheet
- OWTS Fire Damage Assessment Form
- Site plan with location of OWTS and all structures



MALIBU REBUILD CENTER - COME VISIT US!



23805 Stuart Ranch Road, Suite 240

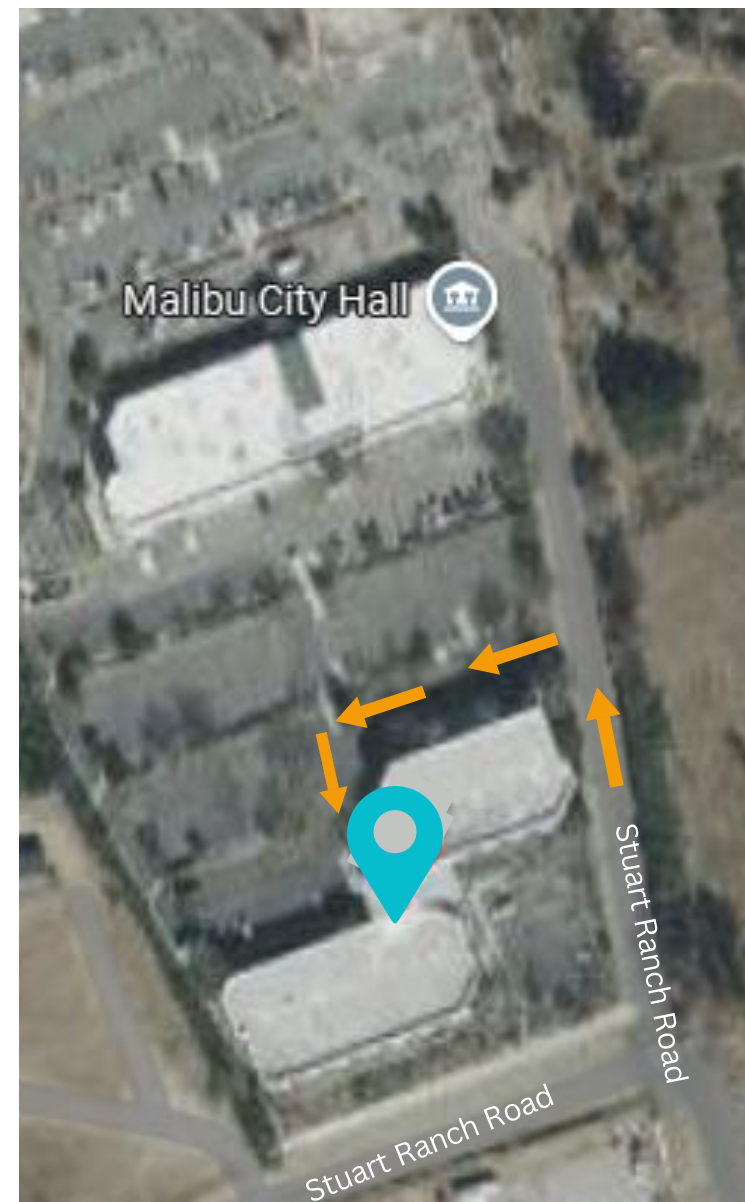
- Located across the parking lot from Malibu City Hall (next to UCLA Health)



Open: Monday - Friday (8 am - 4 pm)

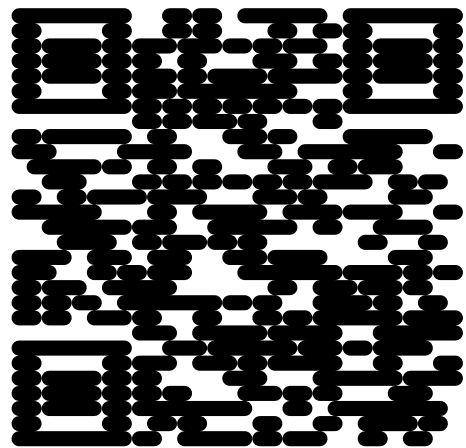


(310) 456 - 2489, ext. 400





STAY CONNECTED WITH THE CITY OF MALIBU

REBUILDING TOGETHER



maliburebuilds.org





REBUILDING ▾

DEBRIS REMOVAL

PREPAREDNESS ▾

RESOURCES ▾

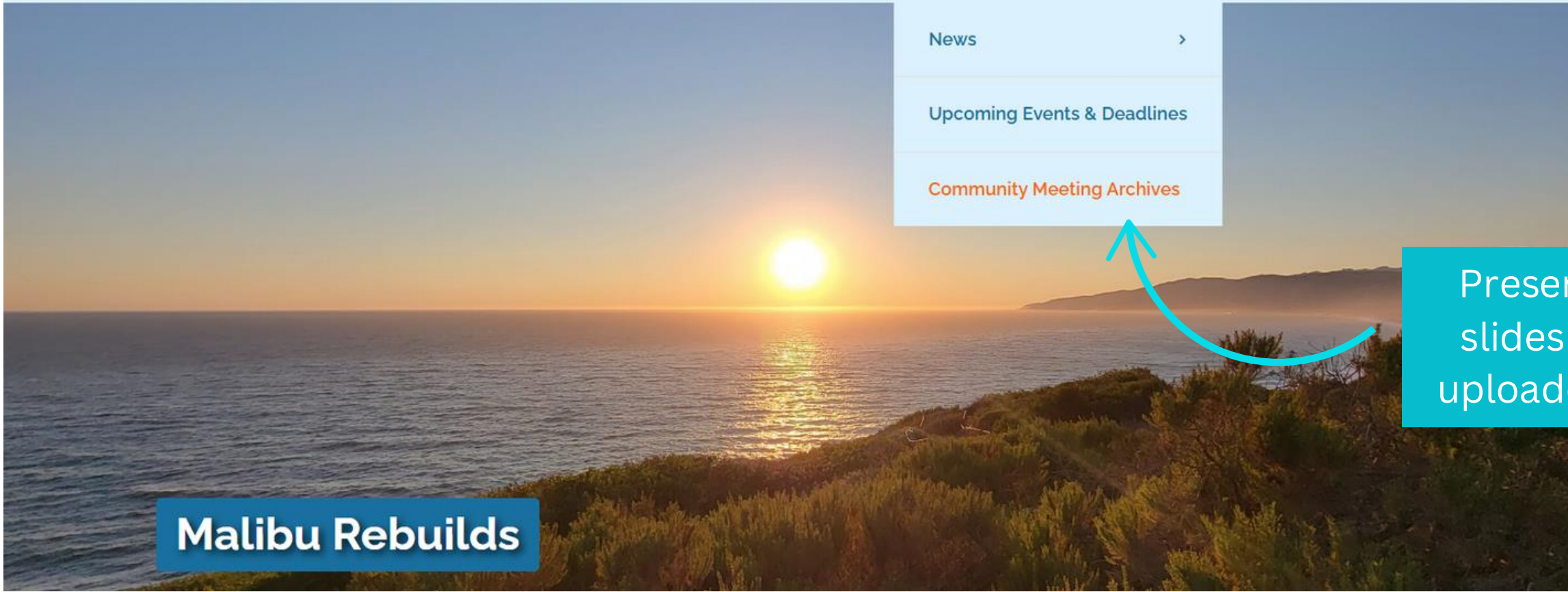
NEWS, EVENTS & DEADLINES ▾

CONTACT OR VISIT US

News >

Upcoming Events & Deadlines

Community Meeting Archives



Malibu Rebuilds

Presentation slides will be uploaded here!

