



**MALIBU
REBUILDS**

MalibuRebuilds.org

WOOLSEY FIRE VS. PALISADES FIRE

Woolsey Fire – 2018 (466 Destroyed Structures)

- Gov's Exec Orders did not exempt LCP permits
 - LCP permits created backlogs
- Rebuild Team
 - Contract Planners used vs. City Staff
 - 1 Firm for Building Plan Check

Palisades Fire – 2025 (Estimated 27% Increase from Woolsey Fire*)

- Gov's Orders exempts LCP permits like-for-like +10%
- Dedicated Rebuild Center
 - "One-stop shop" location
 - Dedicated City Staff
 - 4 Firms for Building Plan Check
- Inter-Agency Coordination and Task Forces
- Digital Processes & Virtual Appointments

REBUILD PROCESS

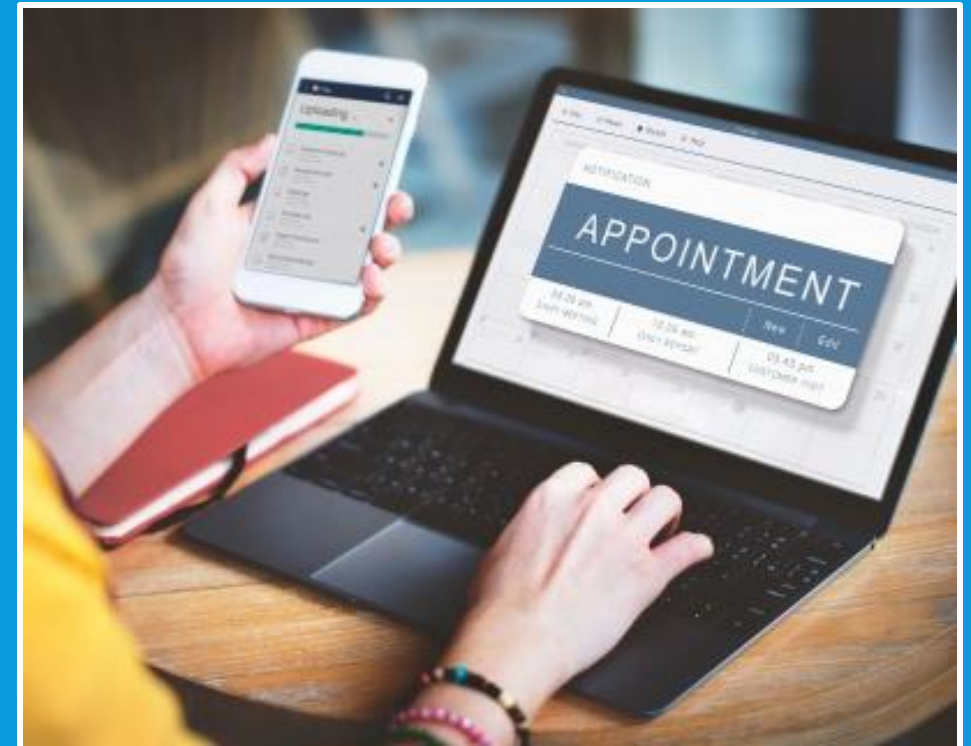
MEET WITH CITY STAFF

Initial Rebuild Appointment

- **Option 1** – Schedule an in-person appointment
- **Option 2** – Schedule a virtual appointment
- **Option 3** – Walk-Ins welcome at the Rebuild Center

For appointments contact MalibuRecovers@MalibuCity.org or (310) 456-2489, ext. 400

If you have already determined your rebuild option, you can make an appointment for site verification with an individual or multiple departments/specialists (Fire, Geology, Coastal Engineering, Public Works) in the initial rebuild phase.



DETERMINE YOUR REBUILD OPTION

#1

- Like-for-Like
- Administrative Review (PV)

#2

- Like-for-Like +10%
- Administrative Review (APR; *PV Pending)

#3

- Over 10% Expansion
- Coastal Development Permit
- Planning Commission

PROJECT WORKFLOW

1. Select a Rebuild Option

2. Select Building Design Professionals

3. Site Verification

4. Rebuild Appointment at Rebuild Center

5. Architectural Plan Submittal (Review and Approval)

6. Building Plan Check Submittal (Review and Approval)

7. Inspections

Planning Entitlement

Construction Permit

Certificate of Occupancy

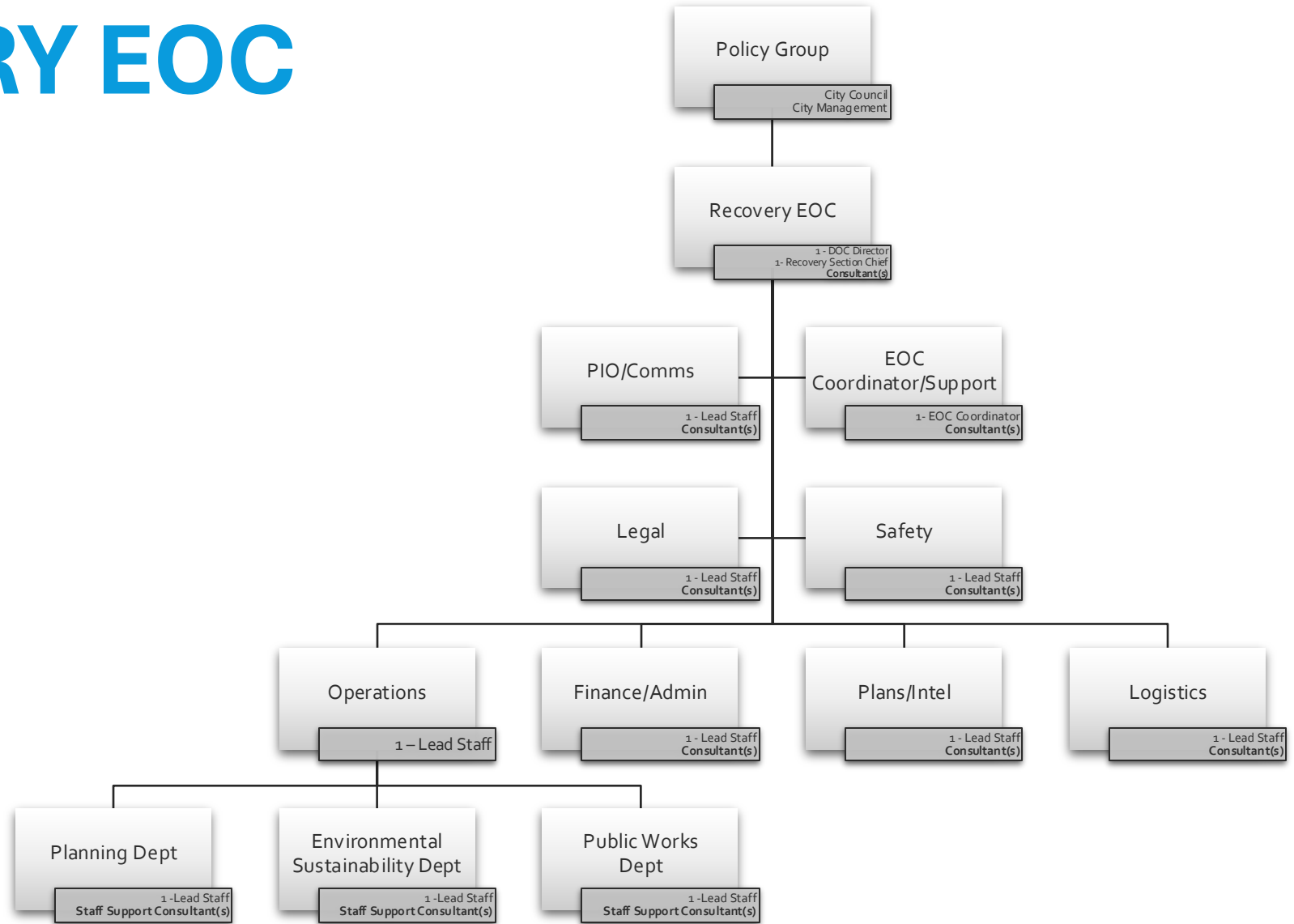
STREAMLINED REVIEW PROCESS

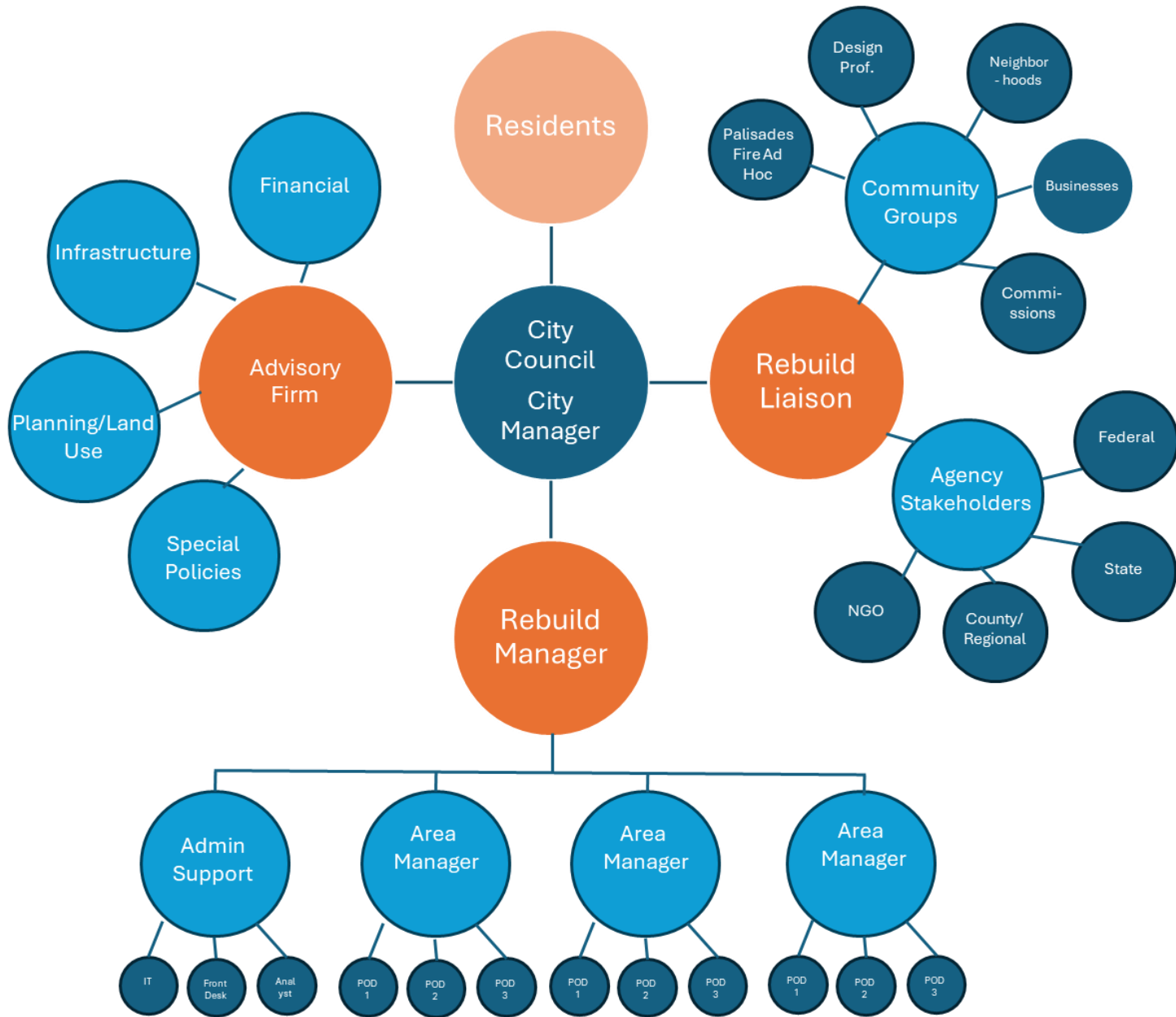




EMERGENCY OPERATIONS CENTER

RECOVERY EOC





PATH FORWARD

POD = Staff + Consultants

PL, B&S, PW, Geo, Bio, Coastal, Env.
Health, Fire & W29.

MALIBU REBUILD CENTER

MALIBU REBUILD CENTER

23805 Stuart Ranch Road, Suite 240

Monday-Friday, 8AM – 4PM

(310) 456-2489, ext. 400

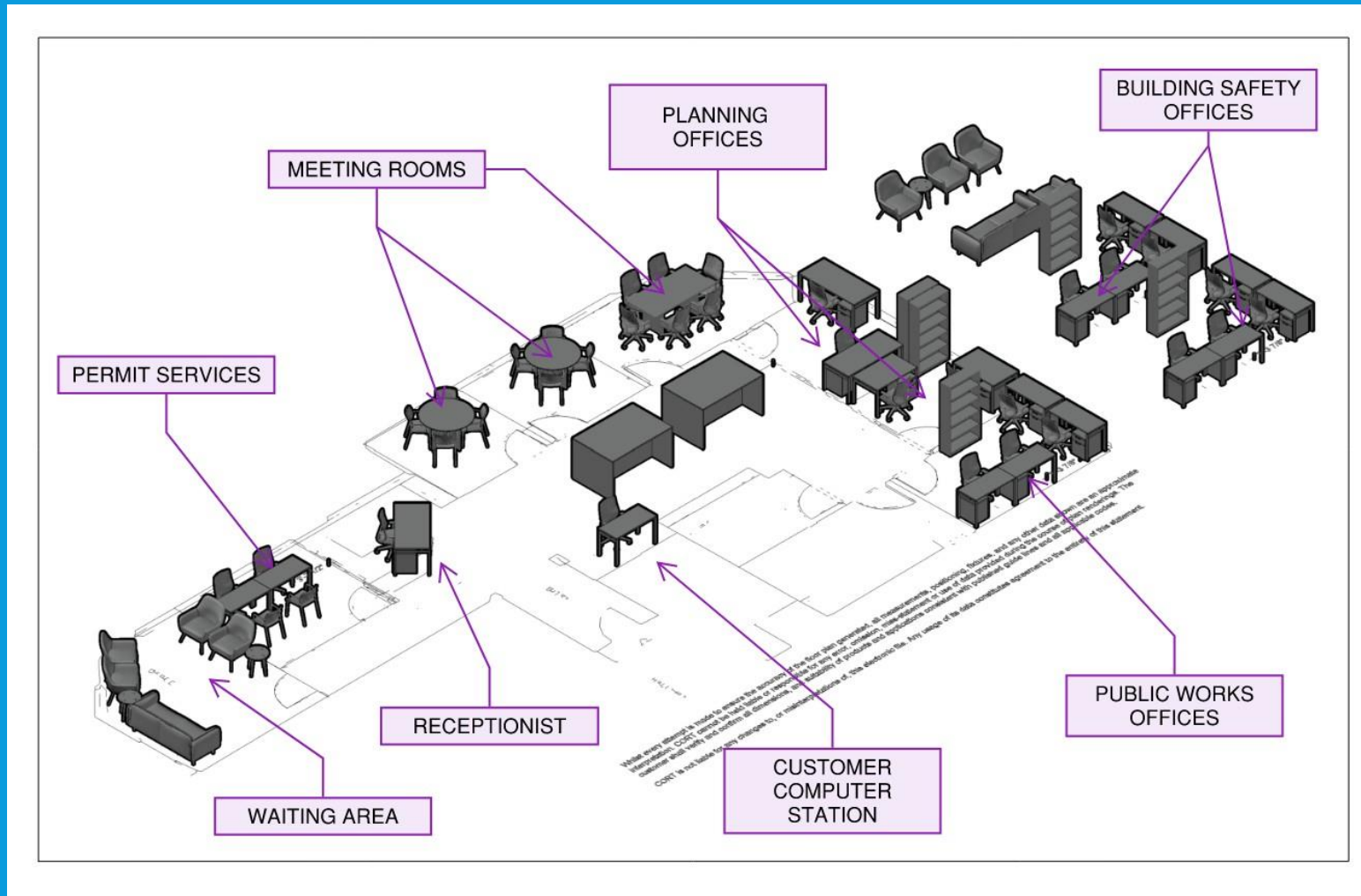
Opening date of
Monday, March 10, 2025



MALIBU REBUILD CENTER

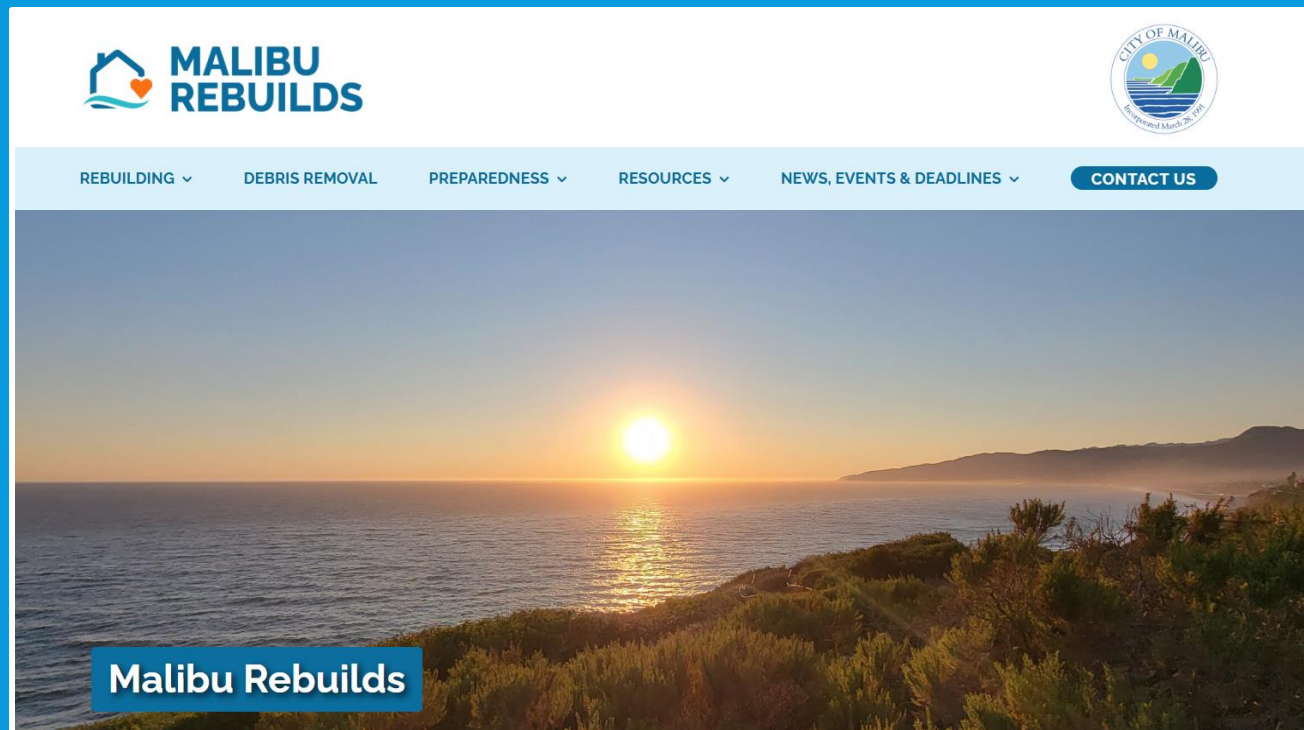
Features
20 City staff and consultants
Dedicated receptionist
Queue management platform and waiting room
Desktop kiosk with frequently used digital forms
Private consulting rooms
Community resource board
Access to City networks and databases
Phones compatible with City Hall for transferring

MALIBU REBUILD CENTER



MALIBU REBUILD OUTREACH

Dedicated Website



Weekly Newsletter





**MALIBU
REBUILDS**

MalibuRebuilds.org